



C O N T E N T S

INFORMATION 2

ACTIVITIES 3

TARGET 4

HISTORY 5



INFORMATION

HOME > INFORMATION

Name JAPAN BIOFUELS SUPPLY LLP
(Limited Liability Partnership)

Chief Operating Officer Mr. Eiji MURAHASHI

Secretary General Mr. Suguru KONTANI

Date of establishment January 26th, 2007

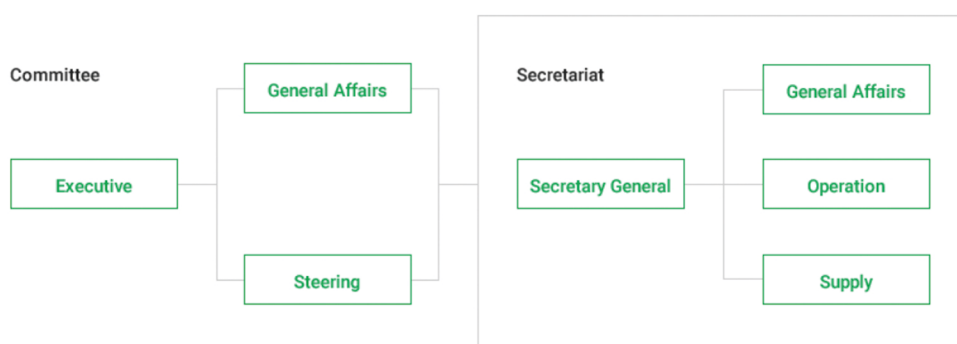
Partners ENEOS Corporation
Idemitsu Kosan Co., Ltd.
Cosmo Oil Co., Ltd.
Fuji Oil Company Ltd.
Taiyo Oil Co., Ltd.

Paid-in Capital JPY 400 mil

Head Office PMO Uchikanda, 14-10, Uchikanda 1-Chome,
Chiyoda-ku, Tokyo, 101-0047, JAPAN
Tel +81-3-6275-0251 Fax +81-3-6275-0256

Main Activities 1.Procurement of Bio-ETBE and Bio-ethanol
2.Distribution of biofuels to the partners' refineries

Organization

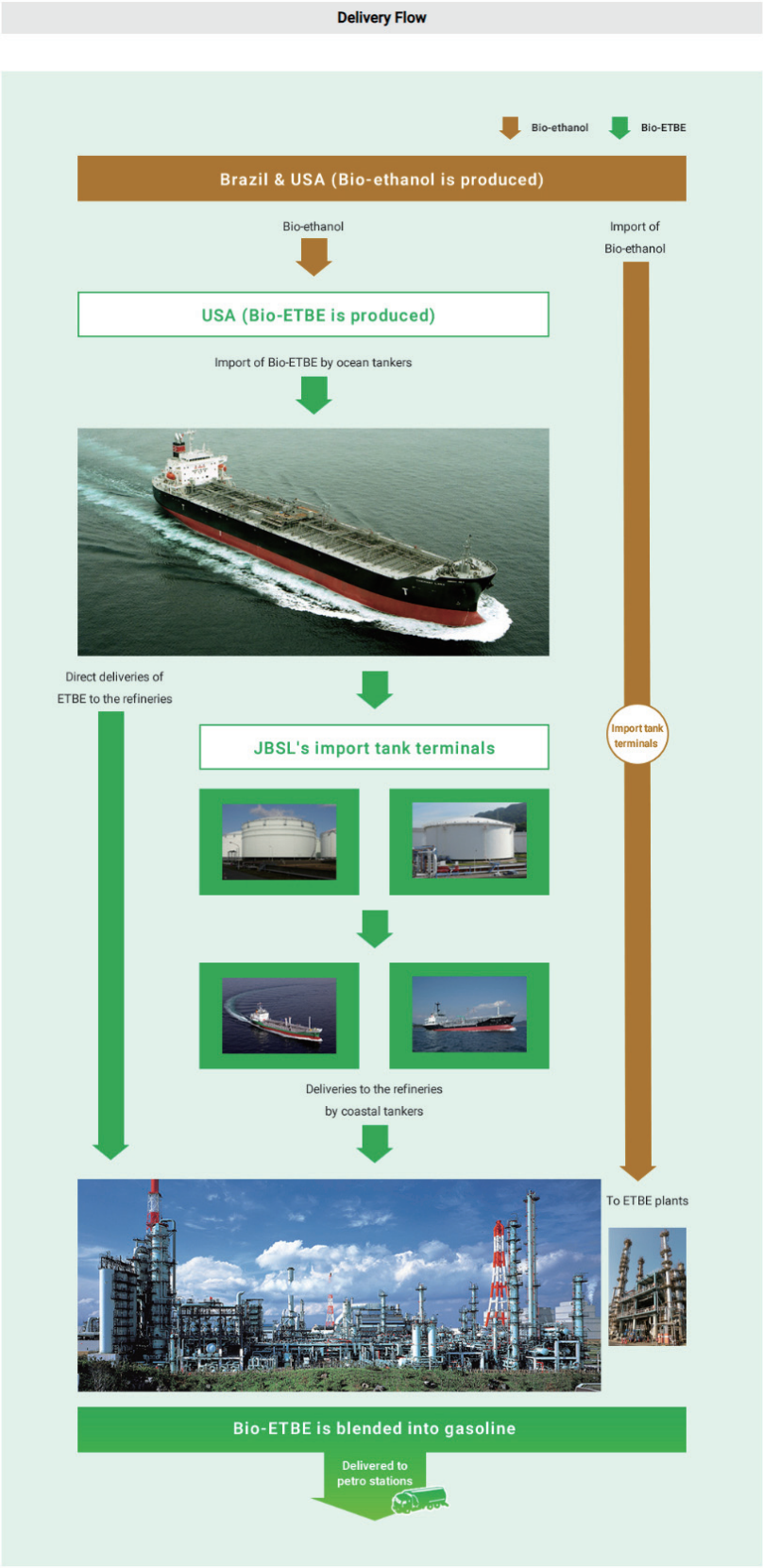


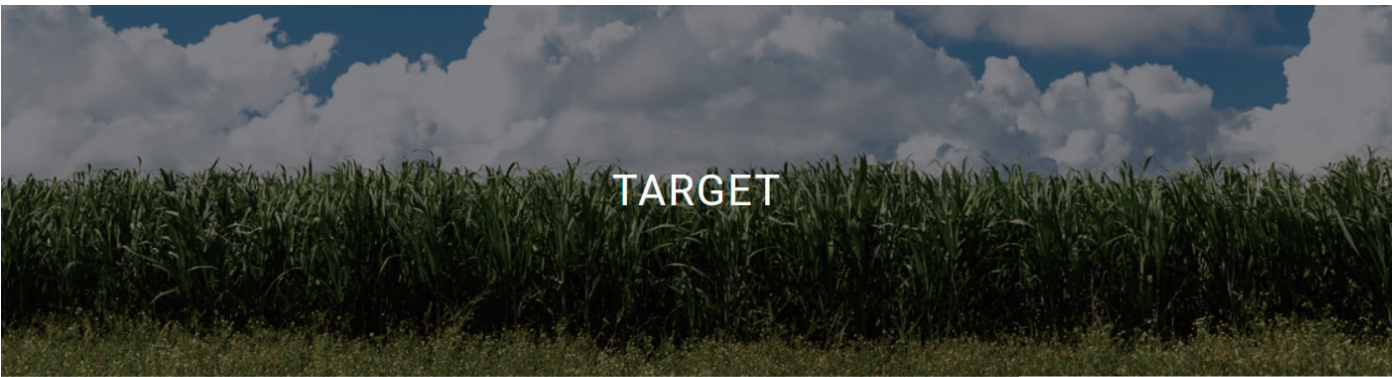


ACTIVITIES

HOME > ACTIVITIES

JBSL undertakes the procurement of biogasoline components such as bio-ETBE and bio-ethanol and the efficient distribution of the biofuels to the refineries all over Japan.





HOME > TARGET

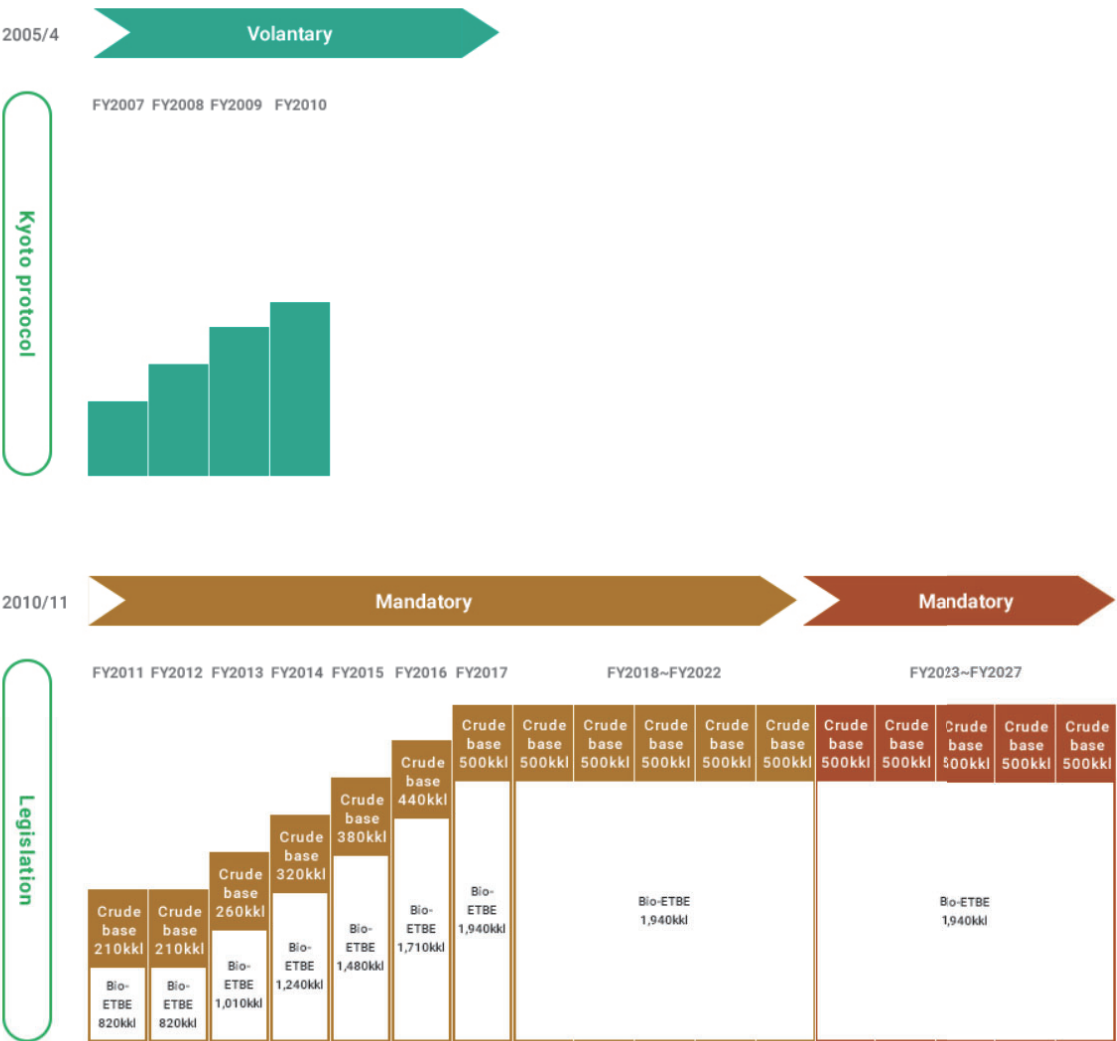
In April, 2005, in line with the Kyoto protocol, the Japanese government specified the use of 500kkl (crude oil equivalent) of biomass fuels for transportation use.

In January, 2006, in response to the request from the government, the oil industry in Japan announced a target plan to blend bio-ETBE (210kkl crude oil equivalent) in FY 2010, and successfully achieved the target.

Mandatory use of biofuels based on the law (Sophisticated Method of Energy Supply Structure) started in FY2011. In accordance with the mandate, the oil industry increased the volume of ETBE step by step up to 500kkl crude oil equivalent(1,940kkl as ETBE) in FY2017.

In April 2018, the government announced the extension of the mandate at the volume of 500kkl crude oil equivalent for each year from FY2018 to FY2022.

In April 2023, the government announced the extension of the mandate at the volume of 500kkl crude oil equivalent for each year from FY2023 to FY2027.



HISTORY

HOME > HISTORY

FY2006 (2006/April - 2007/Mar)	Jan	JBSL was established.
FY2007	April	Bio-ETBE import was started.
FY2008	April	Biogasoline sales (bio-ETBE blended) started in 50 gas stations.
	July	Gas stations selling biogasoline (bio-ETBE blended) reached 100.
	Oct	Bio-ETBE purchase contract for 2011 onwards was concluded.
FY2009	April	Bio-ethanol (Brazil) purchase contract for domestic ETBE plants was concluded..
	June	Bio-ethanol (domestic) purchase contract for domestic ETBE plants was concluded.
	Sep	The first domestic bio-ethanol was delivered.
FY2010	April	The first Brazilian bio-ethanol was delivered.
	Nov	The order of mandatory use of bio-ethanol or bio-ETBE (2011-2017) based on the law was announced with the target in 2017 equivalent to 500,000kl of crude oil.
FY2011	April	The mandate of bio-ethanol or bio-ETBE came into effect.
	Mar	The target 210,000kl (crude oil equivalent) was achieved.
FY2012	April	Bio-ETBE purchase contract upto 2017 was concluded.
	Mar	The target 210,000kl (crude oil equivalent) was achieved.
FY2013	Mar	The target 260,000kl (crude oil equivalent) was achieved.
FY2014	Mar	Domestic bio-ethanol purchase contact was terminated due to the discontinuation of the production.
		The target 320,000kl (crude oil equivalent) was achieved.
FY2015	Mar	The target 380,000kl (crude oil equivalent) was achieved.
FY2016	Mar	The target 440,000kl (crude oil equivalent) was achieved.
FY2017	April	The target 500,000kl (crude oil equivalent) was achieved.
FY2018	April	The order of mandatory use of bio-ethanol or bio-ETBE based on the law was announced with the target from 2018 to 2022 equivalent to 500,000kl of crude oil per year.
	Mar	The target 500,000kl (crude oil equivalent) was achieved.
FY2019	Mar	The target 500,000kl (crude oil equivalent) was achieved.
FY2020	Mar	The target 500,000kl (crude oil equivalent) was achieved.
FY2021	Mar	The target 500,000kl (crude oil equivalent) was achieved.
FY2022	Mar	The target 500,000kl (crude oil equivalent) was achieved.
FY2023	Mar	The target 500,000kl (crude oil equivalent) was achieved.
FY2024	Mar	The target 500,000kl (crude oil equivalent) was achieved.